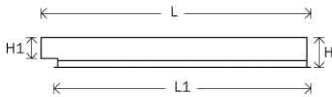
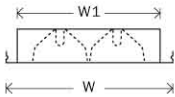
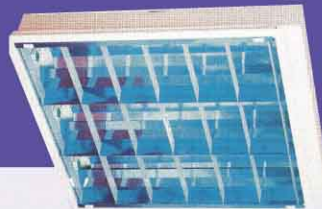




## GENERAL USE LUMINAIRE MIRROR REFLECTOR LUMINAIRE FOR LUXALON CEILING (PLUG-IN FITTING)



### Features:

- Special designed for Luxalon Ceiling (Plug-In Fitting).
- Strong sheet steel housing that is stove enameled inside and outside.
- Anodised aluminium reflector perform better light distribution.
- Easy installation with superior speed mounting system without using any specialize tool.
- Housing are made with 0.5mm high quality cold rolled sheet and treated with epoxy powder coated to give a smooth and attractive finishing.
- Laminated aluminium reflector are available on request.
- **GEAR OPTIONAL:**  
Fitting can be supplied with:
  - (a) 6WLL - Extra Low Loss Ballast
  - (b) EB - Electronic Ballast
  - (c) DEB - Dimmable Electronic Ballast
  - (d) PP - Emergency Power Pack

### Application:

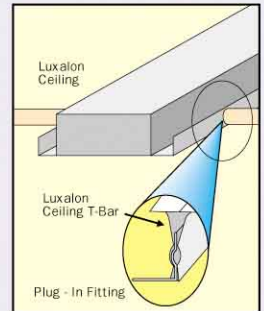
- Office
- Hall
- School
- Other general lighting

### Standard Complied:

- MS IEC 60598-2-2 : 1998
- MS IEC 598-1 : 1997



Emergency Power Pack



MODEL	LAMPS TYPE & RATING	DIMENSION (MM)						CROSS BLADES QTY
		L	L1	H	H1	W	W1	
PLML 220 LC/6WLL	T8 2 X 18W	614	600	93	66	600	560	7
PLML 320 LC/6WLL	T8 3 X 18W	614	600	93	66	600	560	7
PLML 240 LC/6WLL	T8 2 X 36W	1224	1210	93	66	600	560	13
PLML 340 LC/6WLL	T8 3 X 36W	1224	1210	93	66	600	560	13